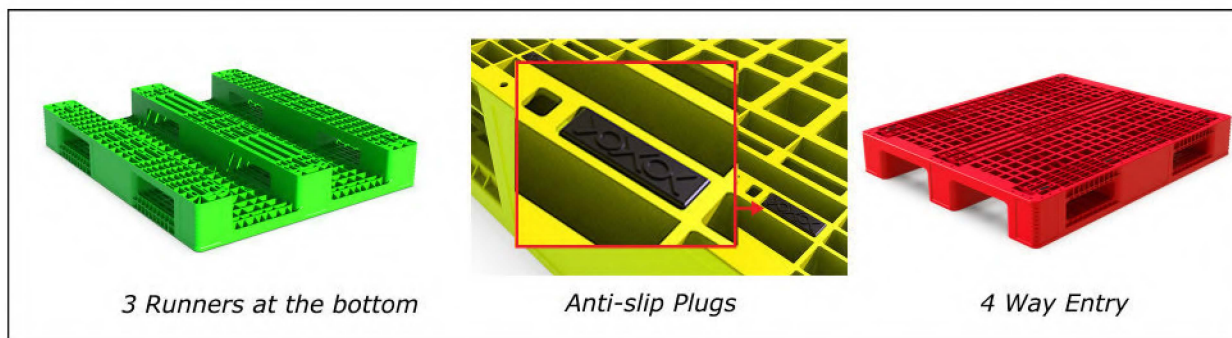
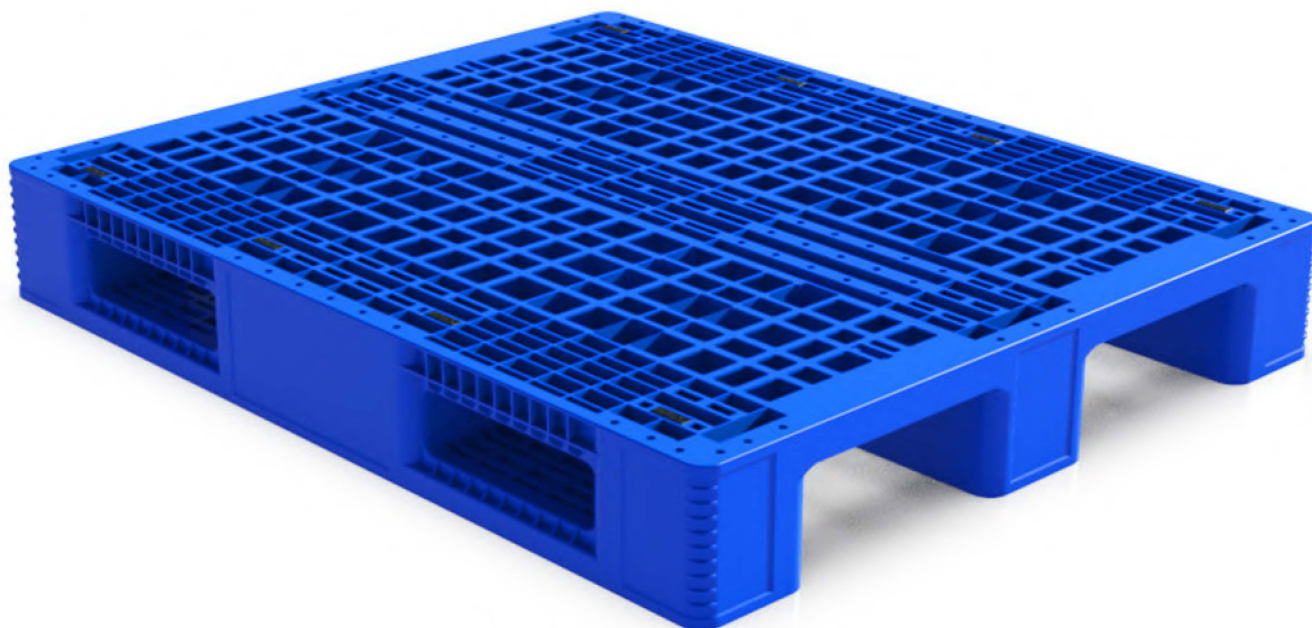


ST-11 | 3RUNNER

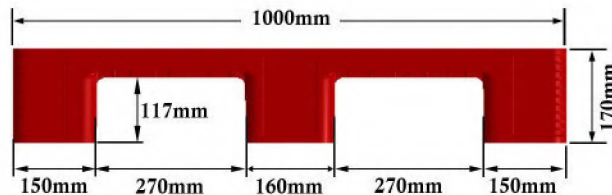
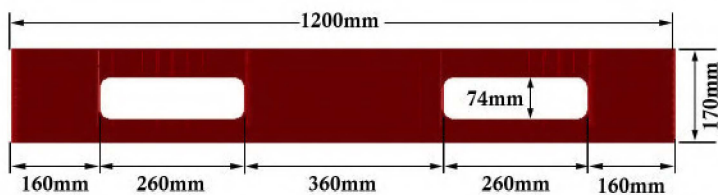


3 Runners at the bottom


Anti-slip Plugs

4 Way Entry

TECHNICAL SPECIFICATION



TECHNICAL DATA

Dimension(mm)	L:1200 x W:1000 x H:170		
Material	HDPE / PP		
Color			
Loading Capacity (Kgs) : ST-11	STATIC	DYNAMIC	RACKING
	6000 Kg	1500 Kg	1000 Kg*
Item Code / Barcode			

*depends upon the span width

Load Quantity	20 ft	40 ft	Trailer Truck
	175 pcs	460 pcs	420 pcs