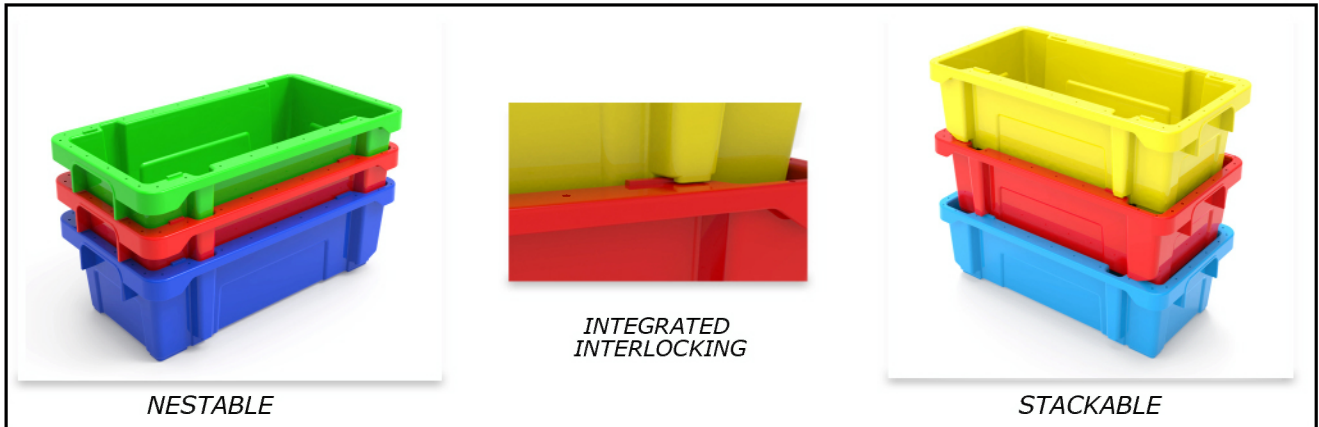
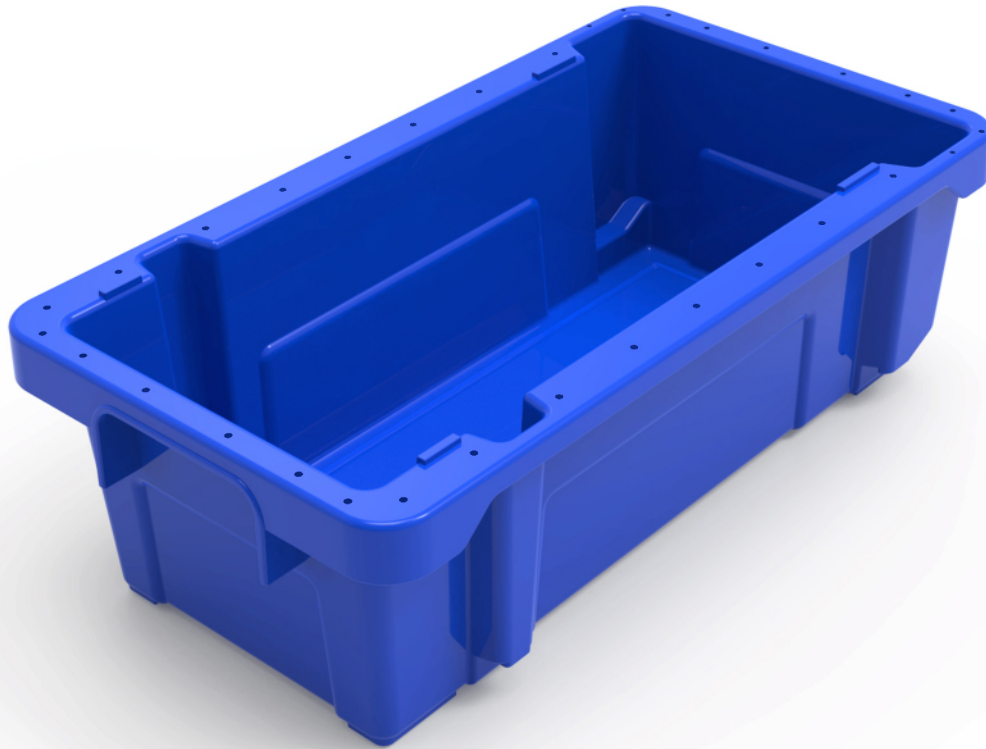


# MILK POUCH CRATE

## 565X300X176MM



TECHNICAL DATA	
DIM-External (mm)	L:565 x W:300 x H:176 MM
Material	HDPE / PP
Color	<span style="color: blue;">●</span> <span style="color: green;">●</span> <span style="color: red;">●</span> <span style="color: yellow;">●</span> <span style="color: black;">●</span> <span style="color: gray;">●</span>
Capacity	29 Ltr
Type	Closed Crate
Item Code / Barcode	11289